



PAAVAI ENGINEERING COLLEGE

(Autonomous)

NH 44, PACHAL, NAMAKKAL-637018

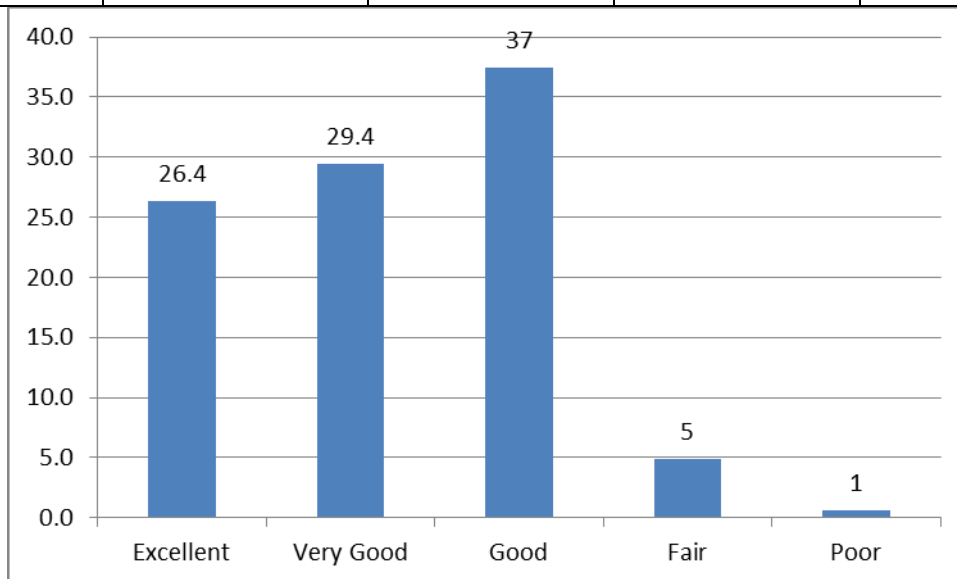
STUDENT'S FEEDBACK ANALYSIS ON CURRICULUM & SYLLABUS – RESPONSE SHEET

DEPARTMENT: COMPUTER SCIENCE AND ENGINEERING

ACADEMIC YEAR: 2022-2023

1. The extent of structure and appropriateness of curriculum

Excellent	Very Good	Good	Fair	Poor
26.4%	29.4%	37%	5%	1%



2. Curriculum caters to the industry needs and offer industry-oriented courses.

Excellent	Very Good	Good	Fair	Poor
20.2%	32.5%	40%	4%	1%



3. Experiential, participatory and problem solving method of learning adopted in curriculum.

Excellent	Very Good	Good	Fair	Poor
-----------	-----------	------	------	------

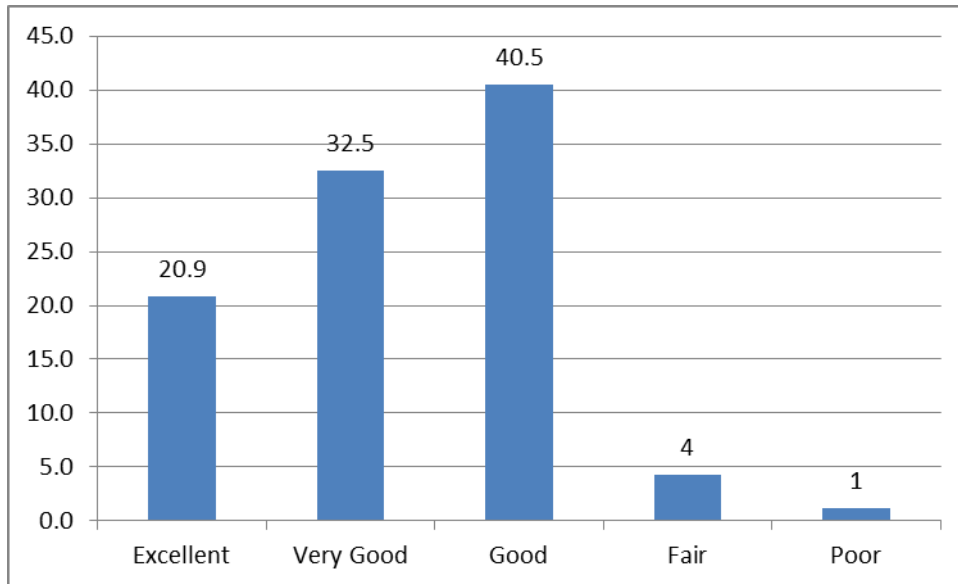


PAAVAI ENGINEERING COLLEGE

(Autonomous)

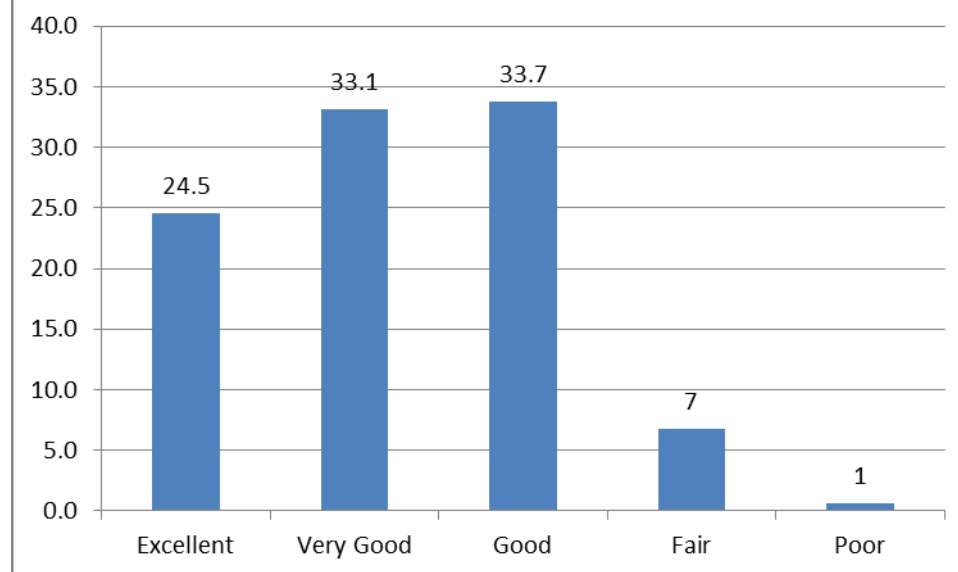
NH 44, PACHAL, NAMAKKAL-637018

21%	33%	41%	4%	1%
-----	-----	-----	----	----



4. The institute provides information in advance about the aims, objectives, learning outcomes, and methods of assessment of the program.

Excellent	Very Good	Good	Fair	Poor
24.5%	33%	34%	7%	1%



5. Curriculum is effective in developing experimental, analytical, and problem-solving skills.

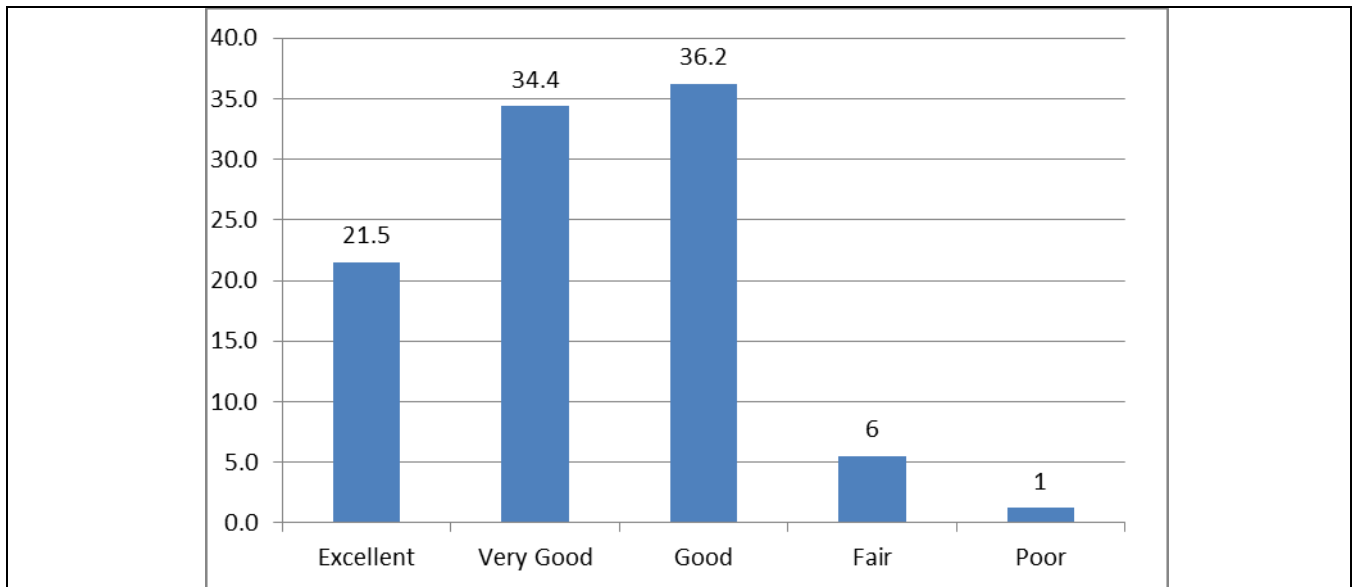
Excellent	Very Good	Good	Fair	Poor
21.5%	34.4%	36.2%	6%	1%



PAAVAI ENGINEERING COLLEGE

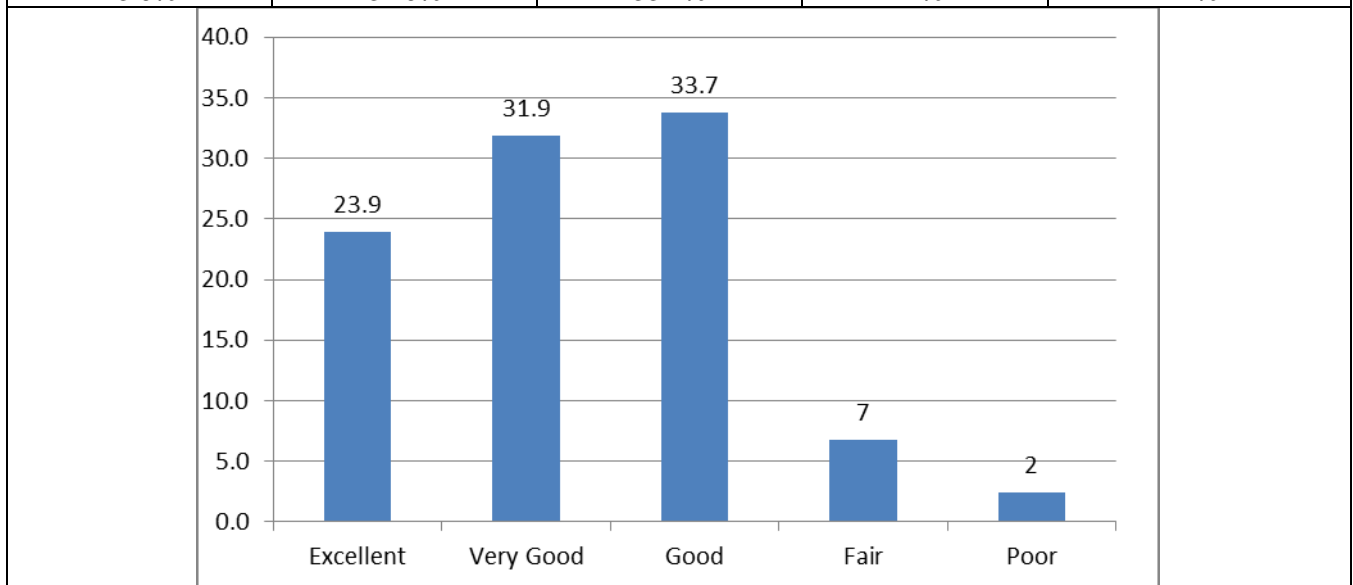
(Autonomous)

NH 44, PACHAL, NAMAKKAL-637018



6. Diverse teaching learning methods like group discussion, case study etc. are adopted to achieve intended learning outcomes.

Excellent	Very Good	Good	Fair	Poor
23.9%	31.9%	33.7%	7%	2%



7. Curricula adhere interdisciplinary approach.

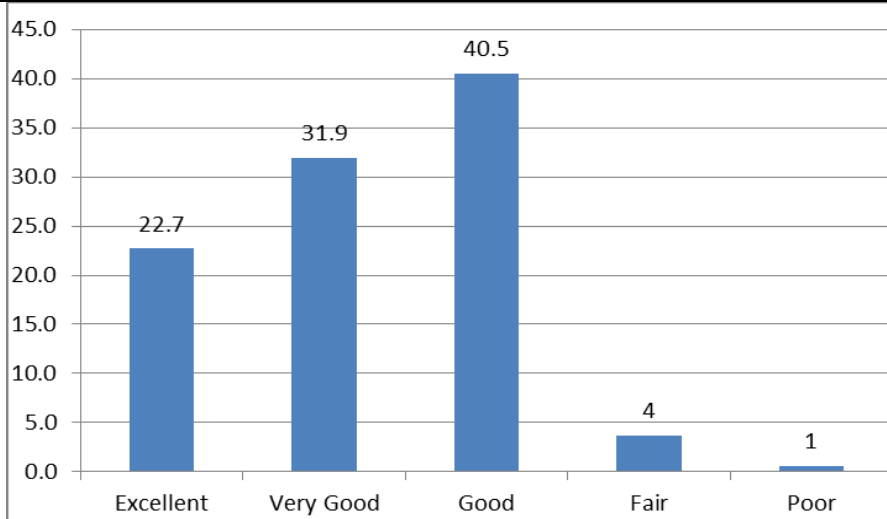
Excellent	Very Good	Good	Fair	Poor
22.7%	31.9%	40.5%	4%	1%



PAAVAI ENGINEERING COLLEGE

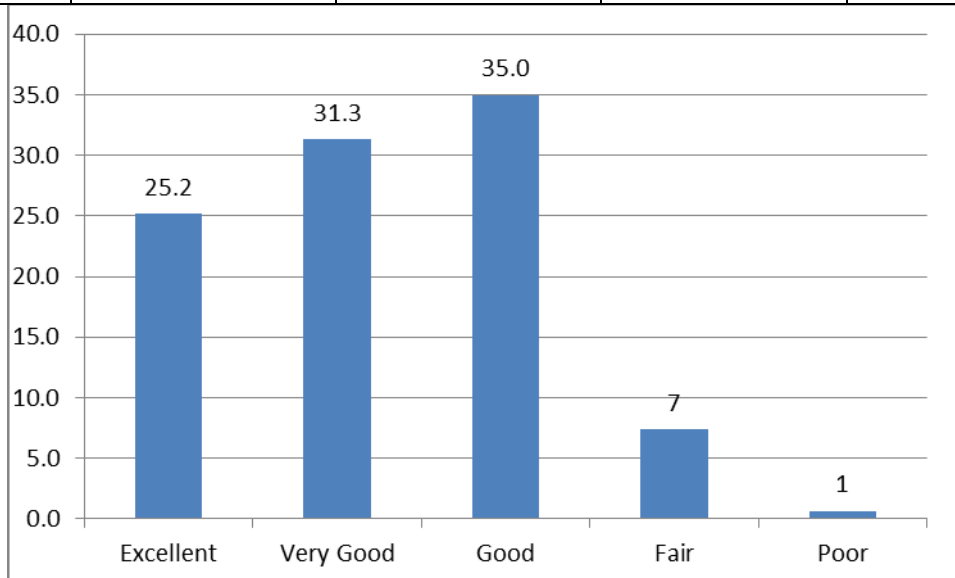
(Autonomous)

NH 44, PACHAL, NAMAKKAL-637018



8. Curriculum is effective in developing ICT and communication skills.

Excellent	Very Good	Good	Fair	Poor
25.2%	31.3%	35%	7%	1%



9. Curriculum meets to local, national, global needs.

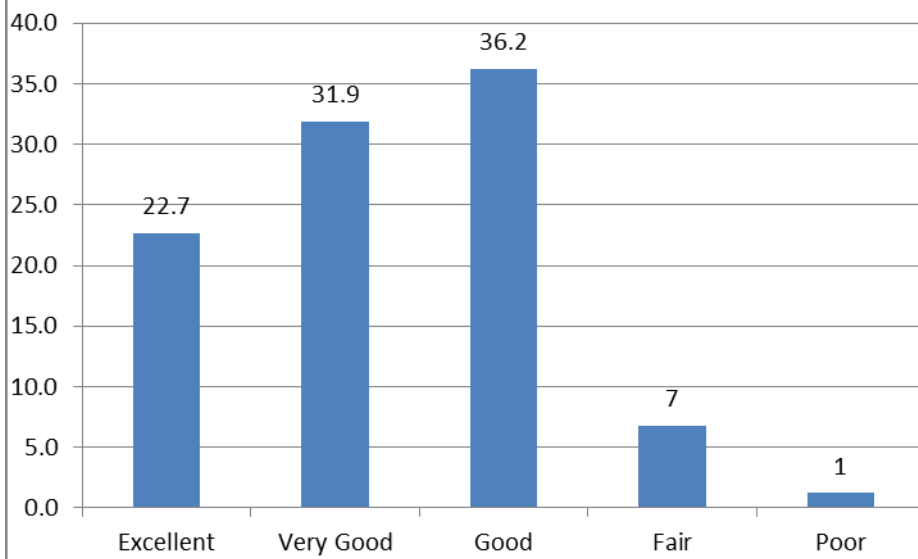
Excellent	Very Good	Good	Fair	Poor
22.7%	32%	36%	7%	1%



PAAVAI ENGINEERING COLLEGE

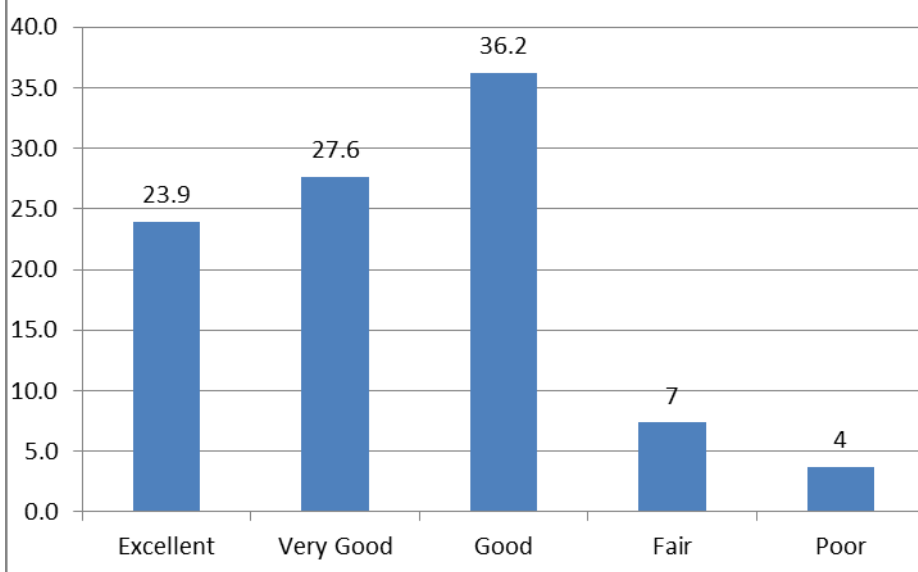
(Autonomous)

NH 44, PACHAL, NAMAKKAL-637018



10. Curricula adhere placement, gender, environmental related courses.

Excellent	Very Good	Good	Fair	Poor
24%	28%	36%	7%	4%



11. Curriculum follows innovative practices.

Excellent	Very Good	Good	Fair	Poor
25%	34.4%	30.7%	6%	3%



PAAVAI ENGINEERING COLLEGE

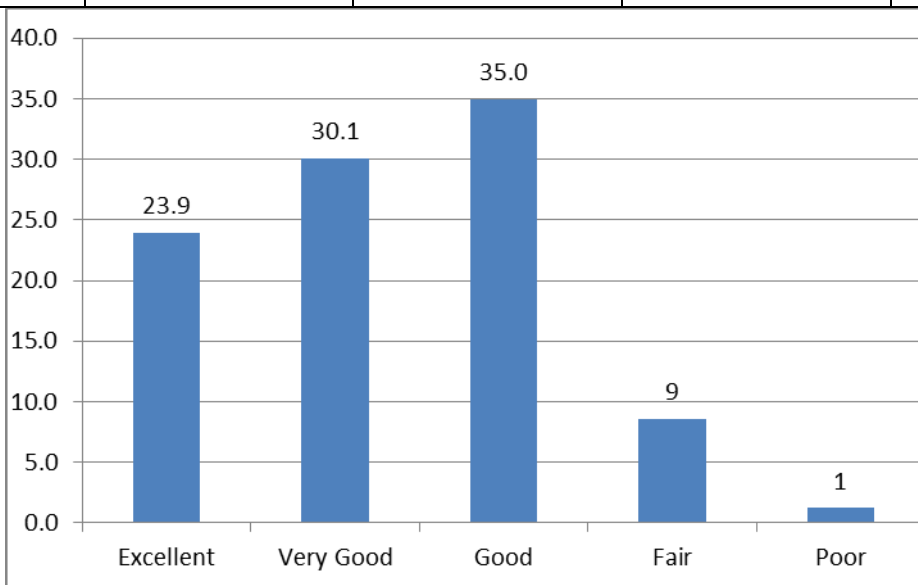
(Autonomous)

NH 44, PACHAL, NAMAKKAL-637018



12. Curriculum is effective in developing online, one credit and value-added courses.

Excellent	Very Good	Good	Fair	Poor
24%	30%	35%	9%	1%



13. Curriculum enhances constructive learning.

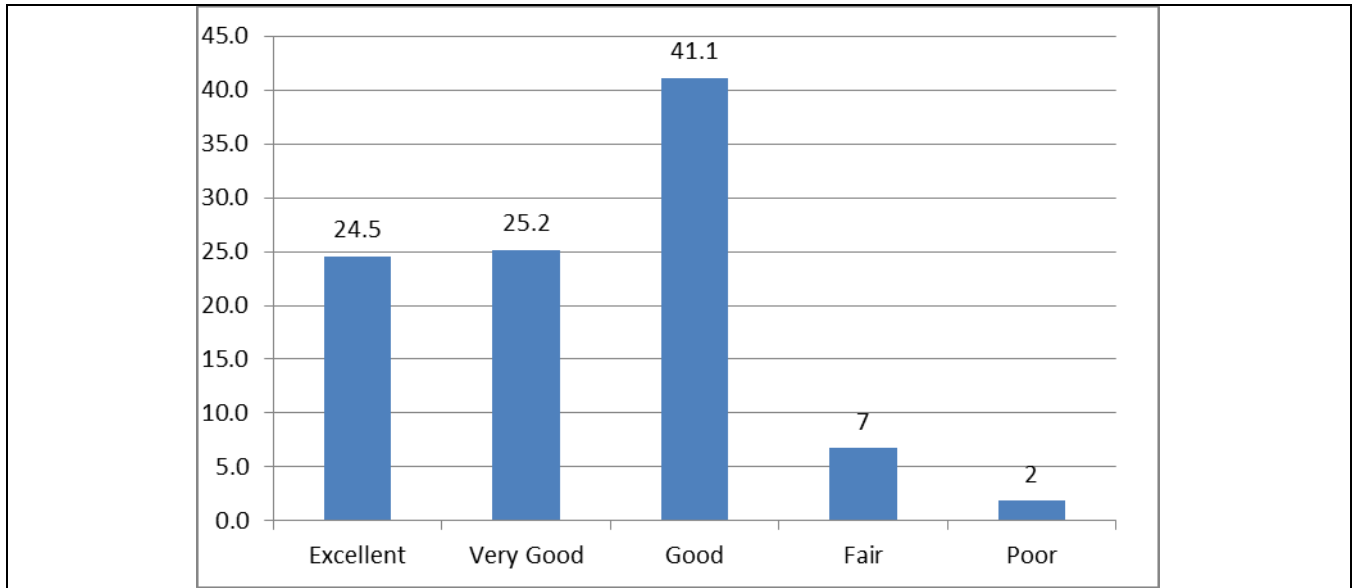
Excellent	Very Good	Good	Fair	Poor
25%	25%	41%	7%	%




PAAVAI ENGINEERING COLLEGE

(Autonomous)

NH 44, PACHAL, NAMAKKAL-637018




HEAD OF THE DEPARTMENT
COMPUTER SCIENCE & ENGINEERING
PAAVAI ENGINEERING COLLEGE
(AUTONOMOUS)
NH 44 PACHAL (PO) NAMAKKAL - 637018


PRINCIPAL
PAAVAI ENGINEERING COLLEGE
NH-7 PACHAL Post, NAMAKKAL Dist



PAAVAI ENGINEERING COLLEGE

(Autonomous)

NH 44, PACHAL, NAMAKKAL-637018

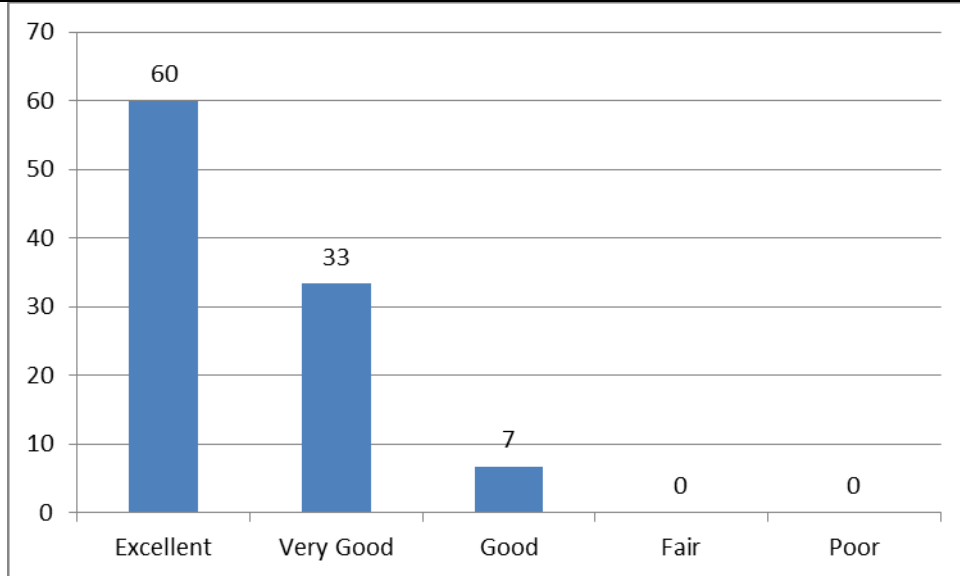
TEACHER'S FEEDBACK ANALYSIS ON CURRICULUM & SYLLABUS – RESPONSE SHEET

DEPARTMENT: COMPUTER SCIENCE AND ENGINEERING

ACADEMIC YEAR: 2022-2023

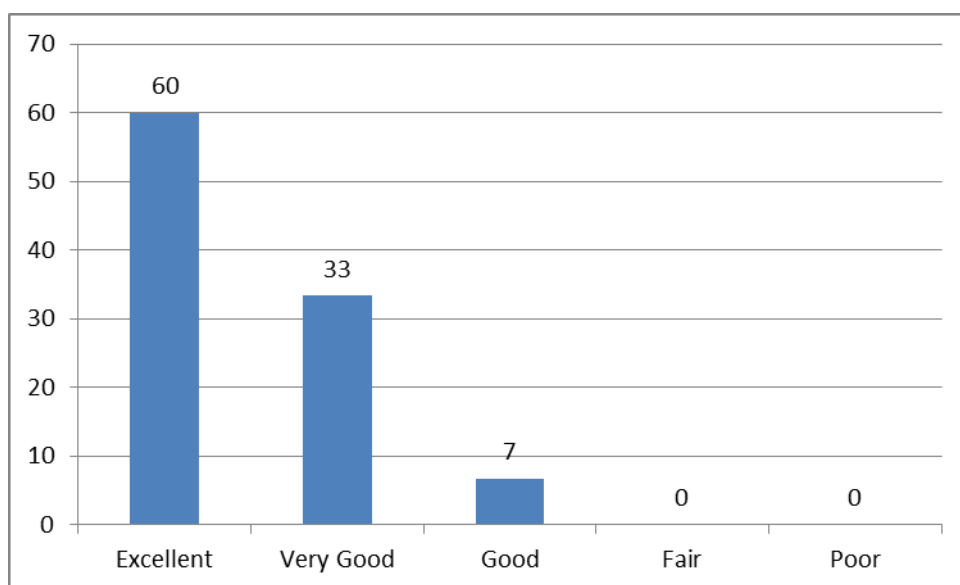
1. Board of studies is taking care to ensure the current relevance of the program being offered.

Excellent	Very Good	Good	Fair	Poor
60%	33%	7%	0%	0%



2. Anna university and AICTE norms for the design and development of curriculum is currently followed.

Excellent	Very Good	Good	Fair	Poor
60%	33%	7%	0%	0%



3. Enough freedom is given to contribute my ideas on curriculum design and development.

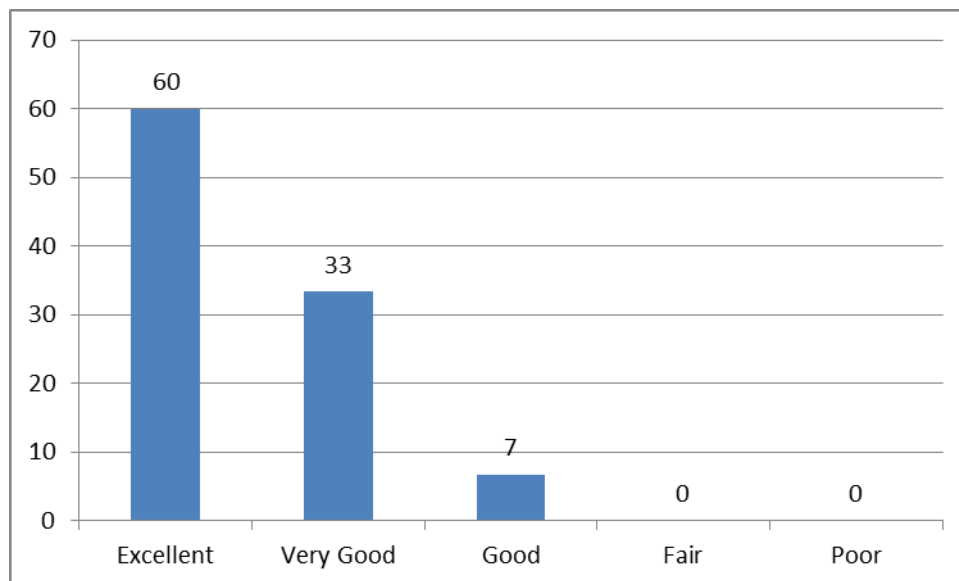


PAAVAI ENGINEERING COLLEGE

(Autonomous)

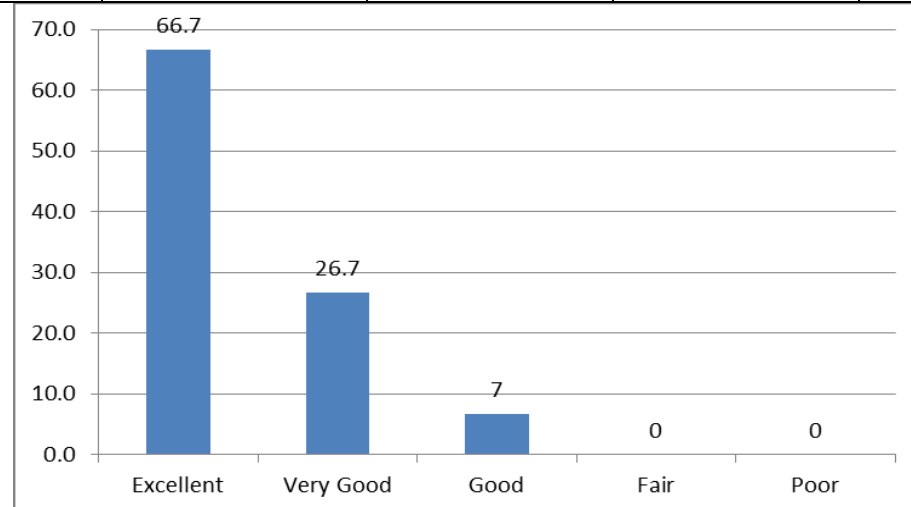
NH 44, PACHAL, NAMAKKAL-637018

Excellent	Very Good	Good	Fair	Poor
60%	33%	7%	0%	0%



4. The curriculum has been updated from time to time.

Excellent	Very Good	Good	Fair	Poor
66.7%	26.7%	7%	0%	0%



5. Departmental level syllabus review committee meeting held for reviewing the syllabus.

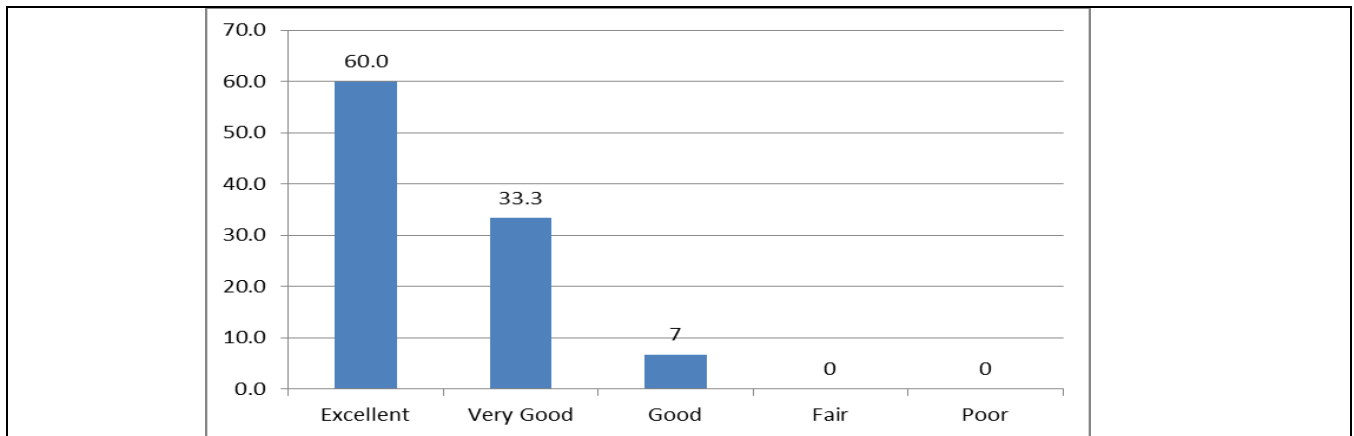
Excellent	Very Good	Good	Fair	Poor
60%	33%	7%	0%	0%



PAAVAI ENGINEERING COLLEGE

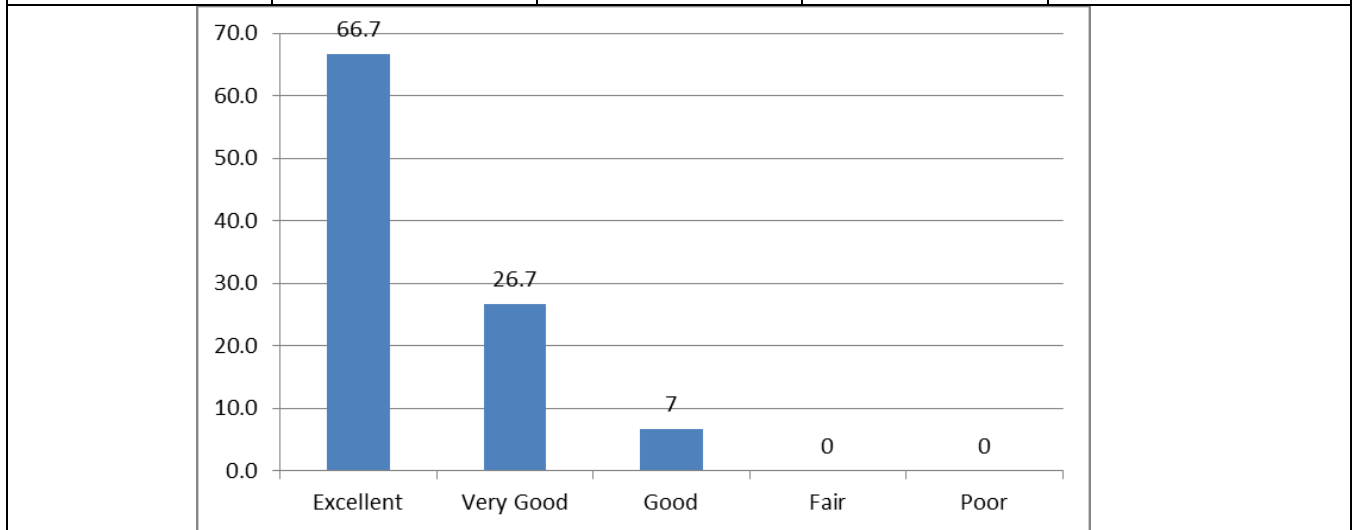
(Autonomous)

NH 44, PACHAL, NAMAKKAL-637018



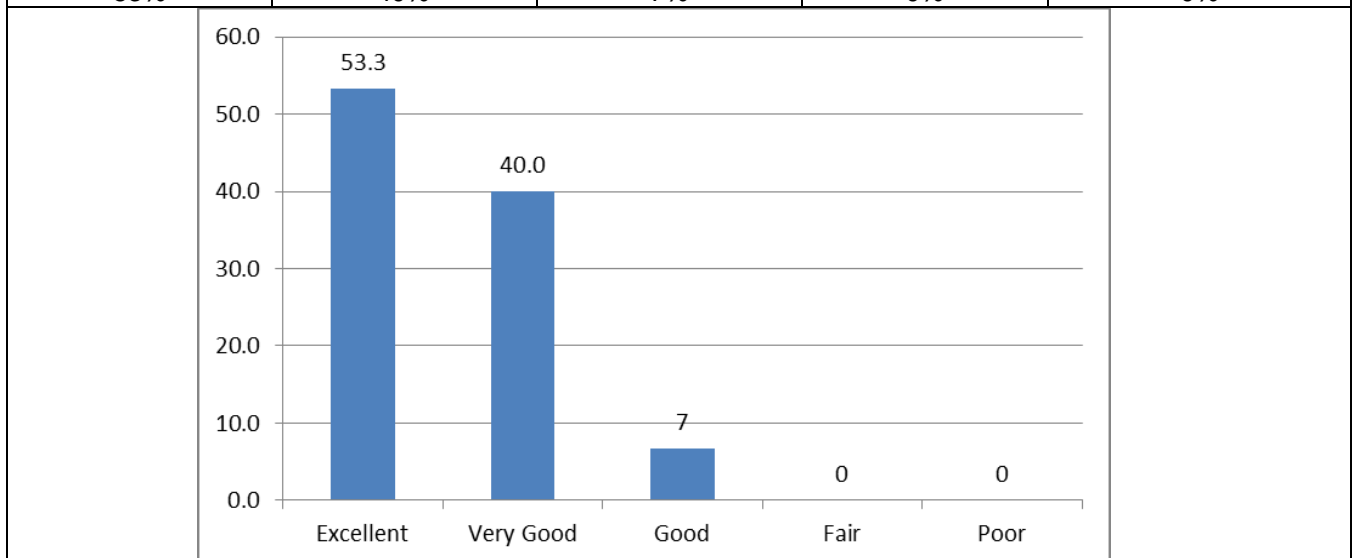
6. Representation from industry experts in department advisory committee is helpful in designing and improving the courses.

Excellent	Very Good	Good	Fair	Poor
66.7%	26.7%	7%	0%	0%



7. Rate the relevance of syllabus to recent Industrial developments.

Excellent	Very Good	Good	Fair	Poor
53%	40%	7%	0%	0%





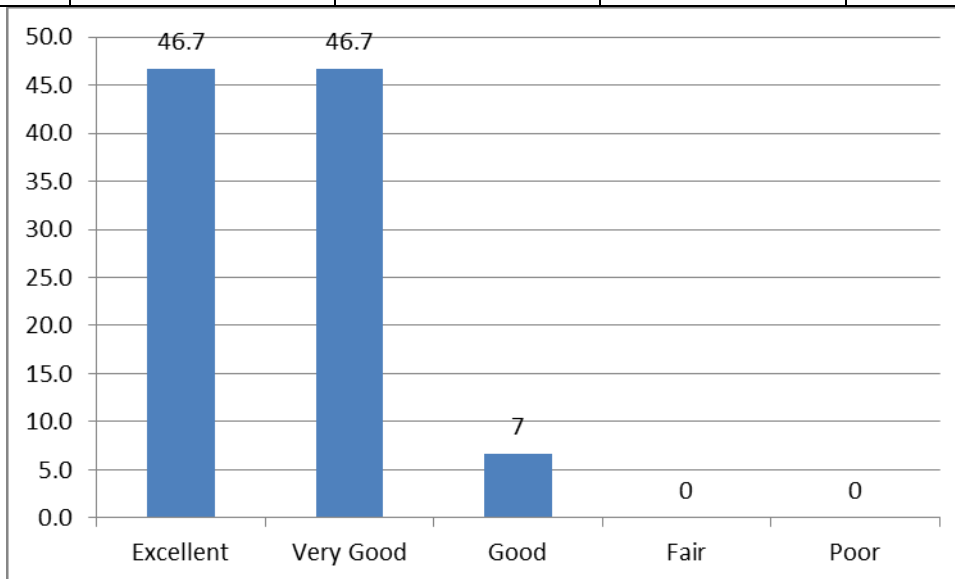
PAAVAI ENGINEERING COLLEGE

(Autonomous)

NH 44, PACHAL, NAMAKKAL-637018

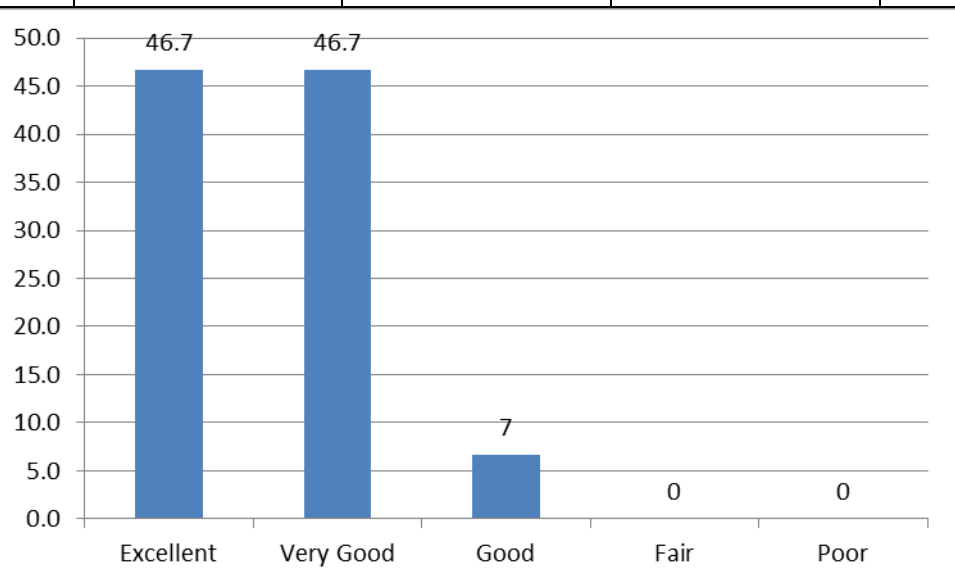
8. Course content for enhancing analytical and technical skills of students.

Excellent	Very Good	Good	Fair	Poor
46.7%	46.7%	7%	0%	0%



9. Curriculum caters the students for applying their knowledge to assess societal, health and safety issues.

Excellent	Very Good	Good	Fair	Poor
46.7%	46.7%	7%	0%	0%



10. Employability is given weight age in curriculum design and development.

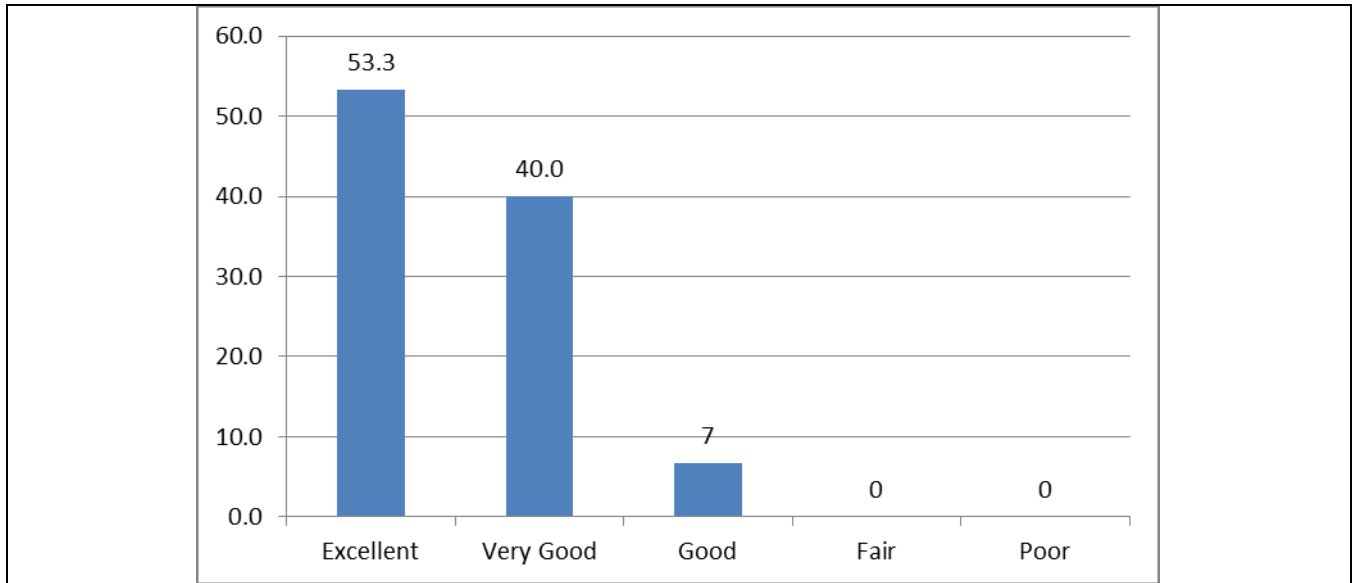
Excellent	Very Good	Good	Fair	Poor
53%	40%	7%	0%	0%



PAAVAI ENGINEERING COLLEGE

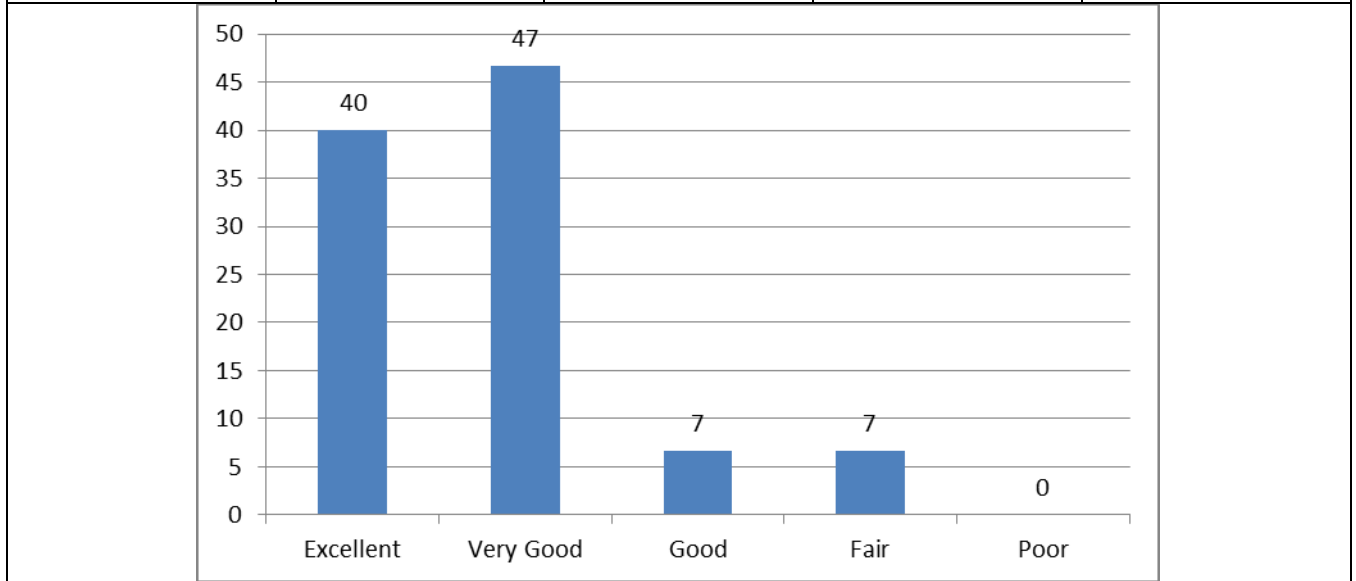
(Autonomous)


NH 44, PACHAL, NAMAKKAL-637018



11. Curriculum have got good academic flexibility.

Excellent	Very Good	Good	Fair	Poor
40%	47%	7%	7%	0%




HEAD OF THE DEPARTMENT
COMPUTER SCIENCE & ENGINEERING
PAAVAI ENGINEERING COLLEGE
(AUTONOMOUS)
NH 44, PACHAL (P.O), NAMAKKAL - 637018


PRINCIPAL
PAAVAI ENGINEERING COLLEGE
NH-7 PACHAL Post, NAMAKKAL Dist



PAAVAI ENGINEERING COLLEGE

(Autonomous)

NH 44, PACHAL, NAMAKKAL-637018

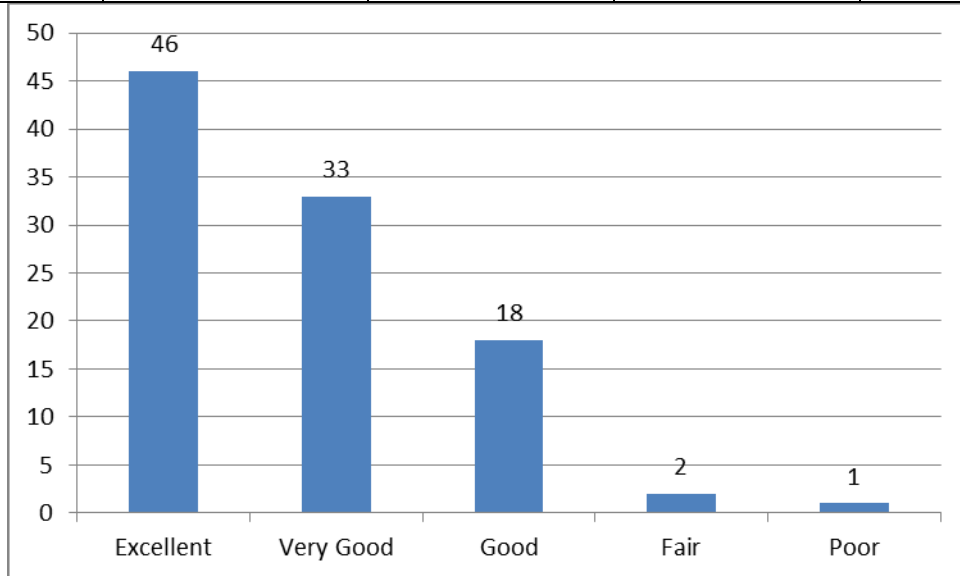
ALUMNI FEEDBACK ANALYSIS ON CURRICULUM & SYLLABUS – RESPONSE SHEET

DEPARTMENT: COMPUTER SCIENCE AND ENGINEERING

ACADEMIC YEAR: 2022-2023

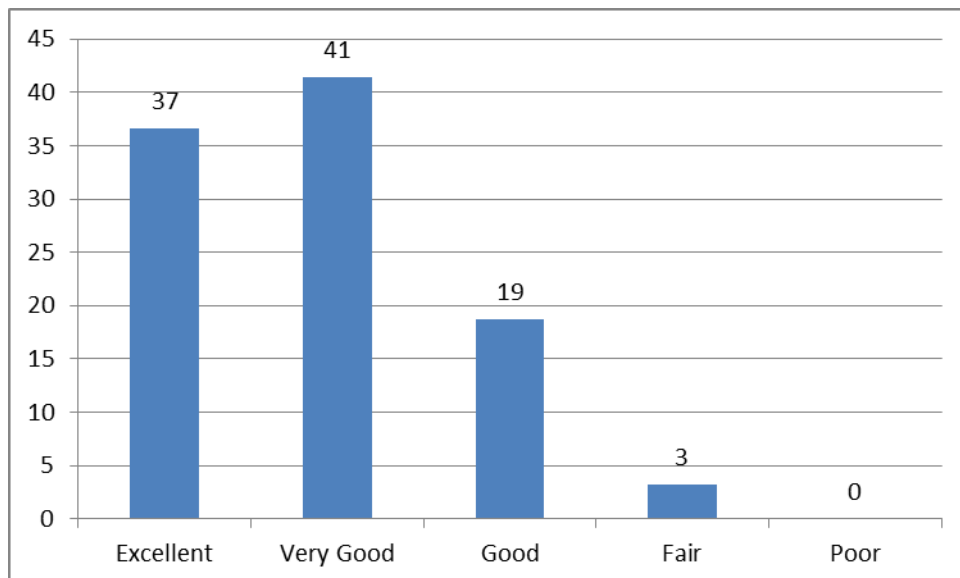
1. Curriculum is structured, comprehensive, relevant and arranged properly.

Excellent	Very Good	Good	Fair	Poor
46%	33%	18%	2%	1%



2. Curriculum is effective in enhancing teamwork.

Excellent	Very Good	Good	Fair	Poor
37%	41%	19%	3%	0%



3. Rate of relevance of syllabus to the recent industrial developments.

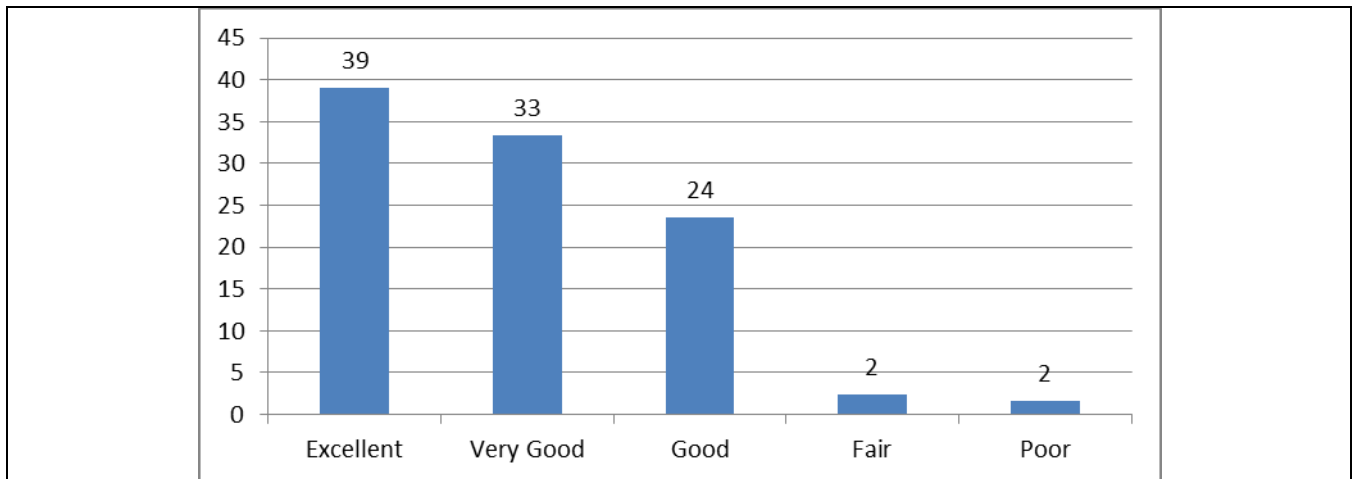
Excellent	Very Good	Good	Fair	Poor
39%	33%	24%	2%	2%



PAAVAI ENGINEERING COLLEGE

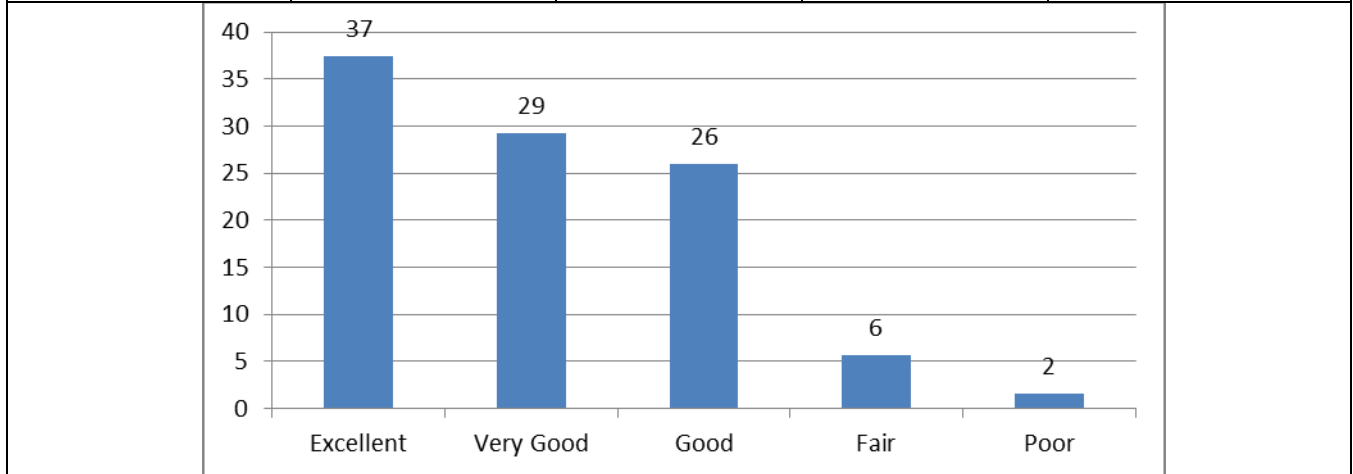
(Autonomous)

NH 44, PACHAL, NAMAKKAL-637018



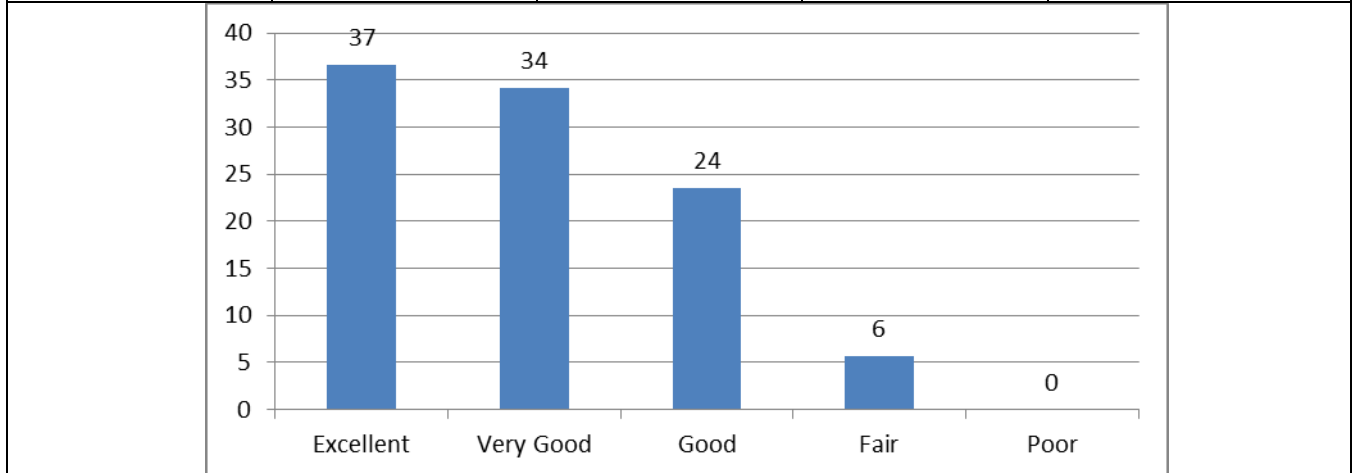
4. Is curriculum helpful with respect to your current job profile

Excellent	Very Good	Good	Fair	Poor
37%	29%	26%	6%	2%



5. Curriculum is helpful to apply the knowledge, skills and abilities with advanced tools used in the industry.

Excellent	Very Good	Good	Fair	Poor
37%	34%	24%	6%	0%



6. Rate the relevance of skillset and knowledge acquired during final year project implementation.

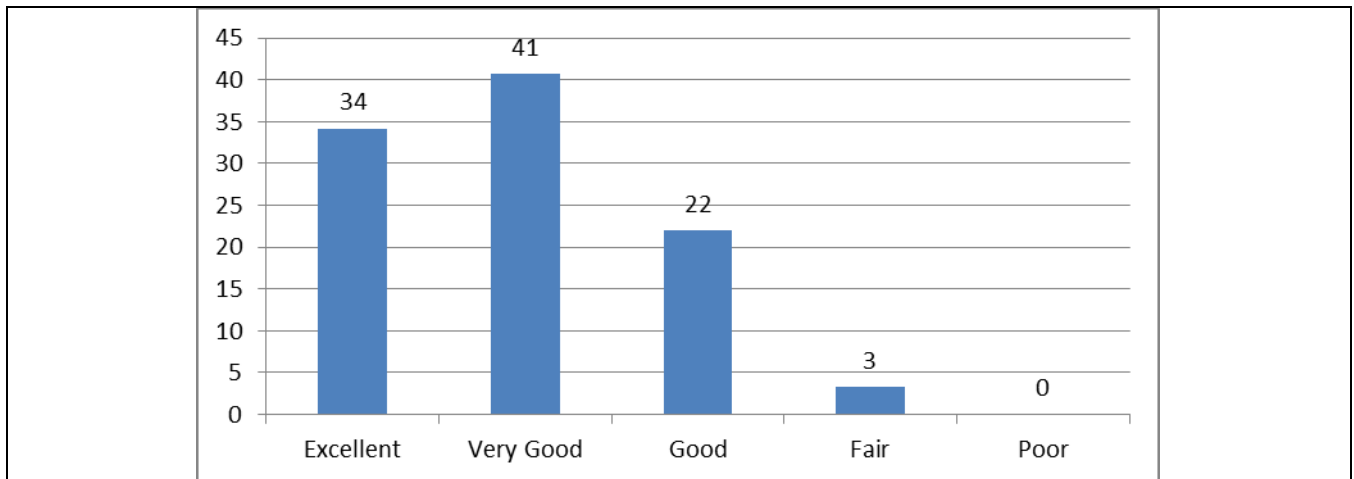
Excellent	Very Good	Good	Fair	Poor
34%	41%	22%	3%	0%



PAAVAI ENGINEERING COLLEGE

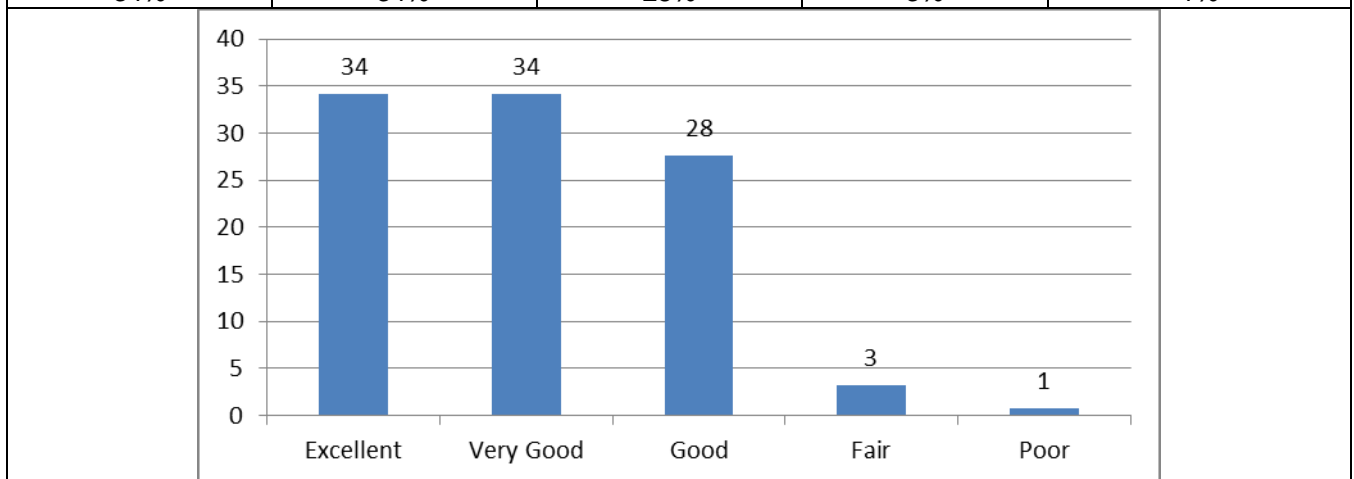
(Autonomous)

NH 44, PACHAL, NAMAKKAL-637018



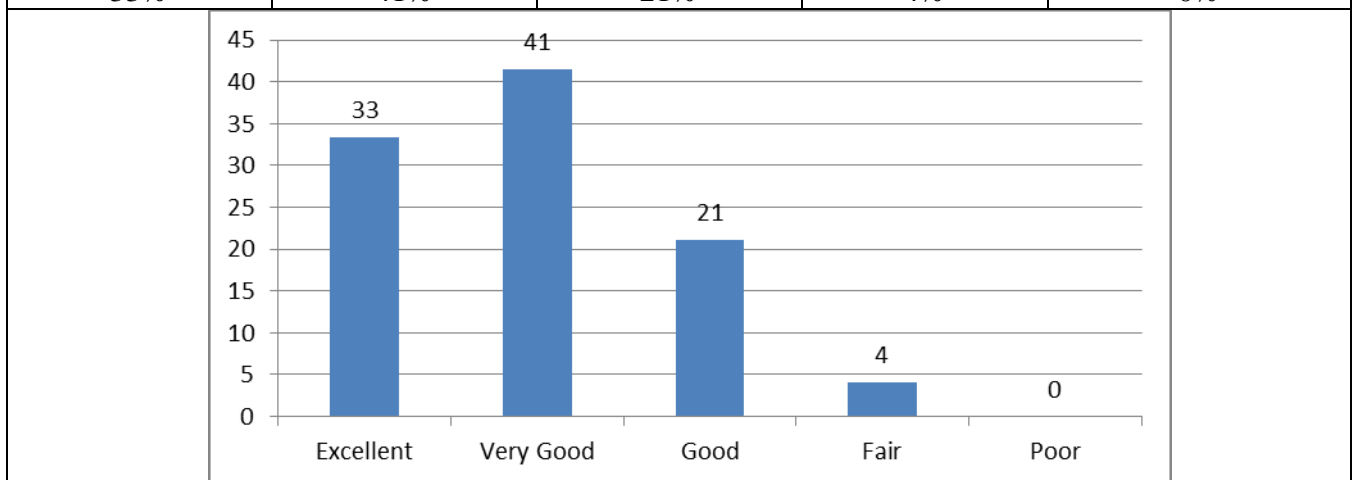
7. Curriculum is effective in employability.

Excellent	Very Good	Good	Fair	Poor
34%	34%	28%	3%	1%



8. Curriculum helps in overall personality development.

Excellent	Very Good	Good	Fair	Poor
33%	41%	21%	4%	0%





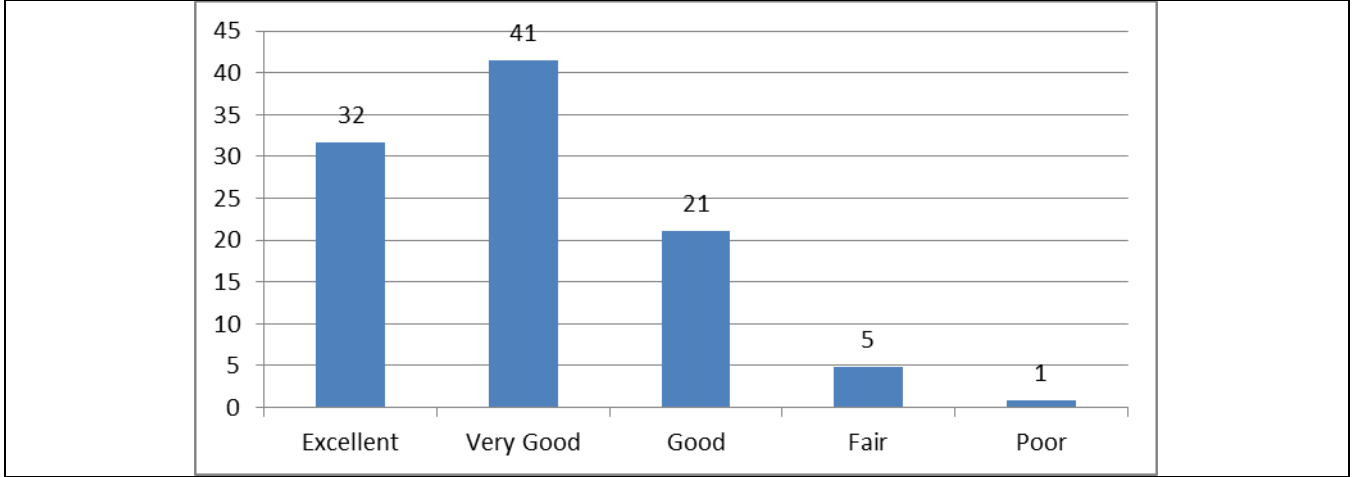
PAAVAI ENGINEERING COLLEGE


(Autonomous)

NH 44, PACHAL, NAMAKKAL-637018

9. Curriculum develops problem solving skills and decision-making skills.

Excellent	Very Good	Good	Fair	Poor
32%	41%	21%	5%	1%




HEAD OF THE DEPARTMENT
COMPUTER SCIENCE & ENGINEERING
PAAVAI ENGINEERING COLLEGE
(AUTONOMOUS)
NH 44 PACHAL (P.O) NAMAKKAL - 637018


PRINCIPAL
PAAVAI ENGINEERING COLLEGE
NH-7 PACHAL Post, NAMAKKAL Dist



PAAVAI ENGINEERING COLLEGE

(Autonomous)

NH 44, PACHAL, NAMAKKAL-637018

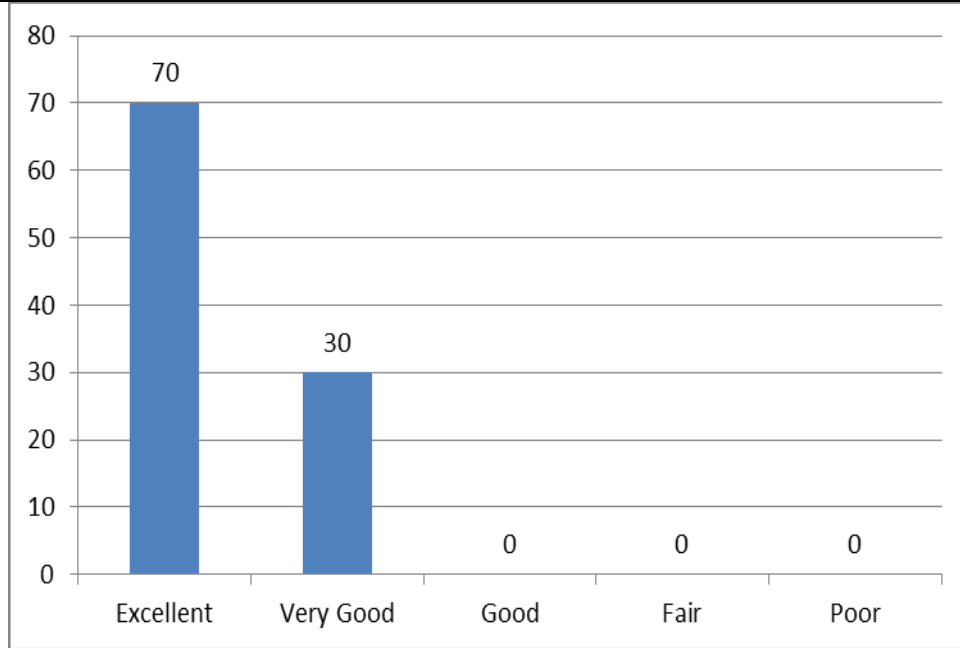
EMPLOYER'S FEEDBACK ANALYSIS ON CURRICULUM & SYLLABUS – RESPONSE SHEET

DEPARTMENT: COMPUTER SCIENCE AND ENGINEERING

ACADEMIC YEAR: 2022-2023

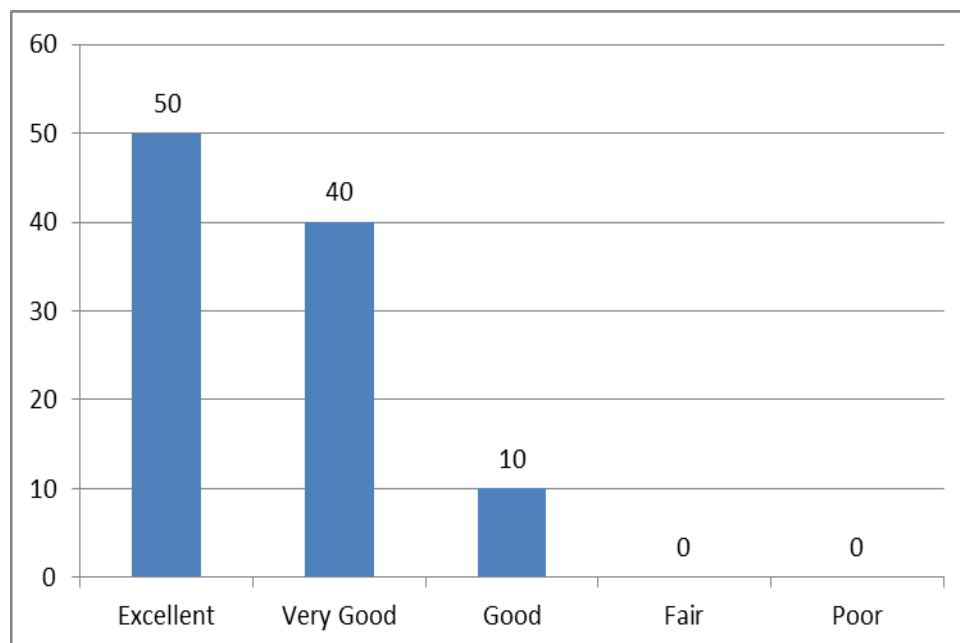
1. Level of technical competency

Excellent	Very Good	Good	Fair	Poor
70%	30%	0%	0%	0%



2. Level of communication skill

Excellent	Very Good	Good	Fair	Poor
50%	40%	10%	0%	0%





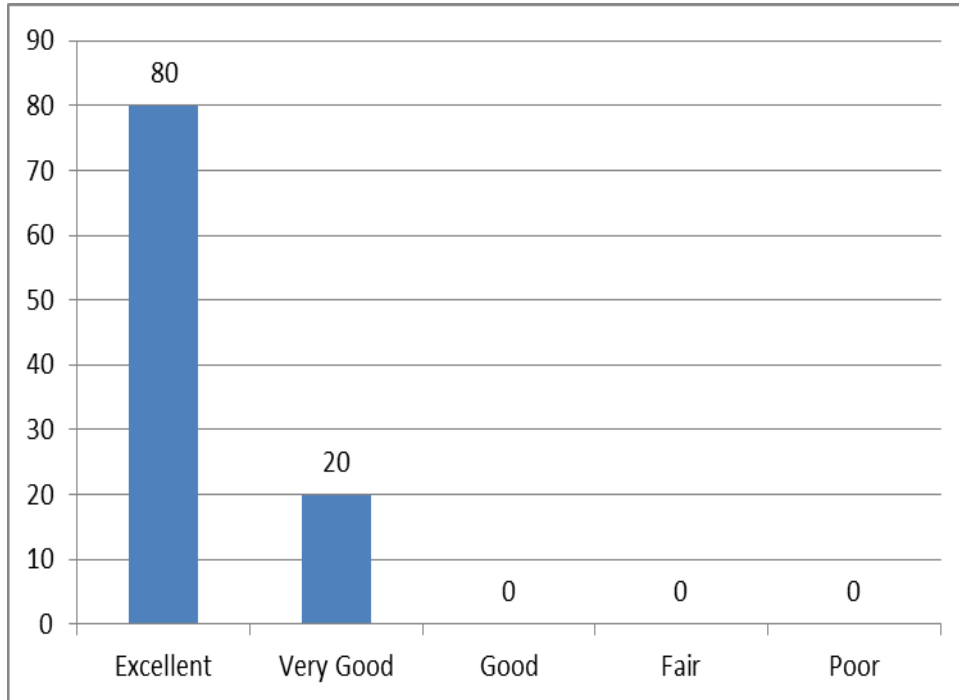
PAAVAI ENGINEERING COLLEGE

(Autonomous)

NH 44, PACHAL, NAMAKKAL-637018

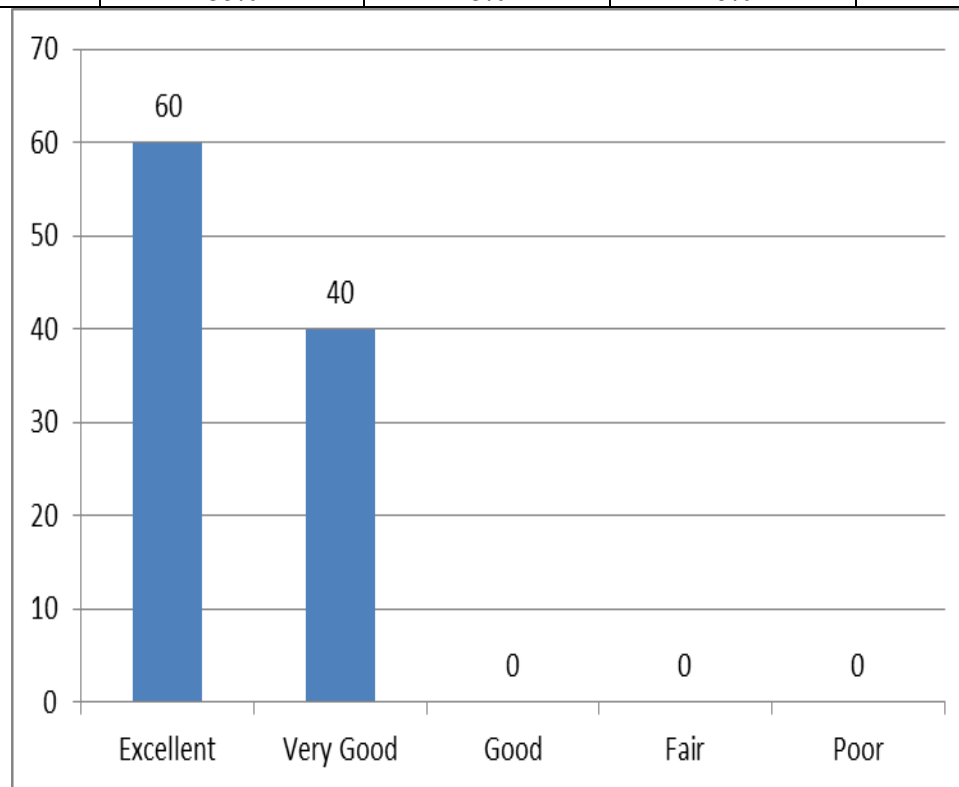
3. Level of commitment to work

Excellent	Very Good	Good	Fair	Poor
80%	20%	0%	0%	0%



4. Level of Professional, ethical, and social responsibility

Excellent	Very Good	Good	Fair	Poor
40%	60%	6%	0%	0%





PAAVAI ENGINEERING COLLEGE

(Autonomous)

NH 44, PACHAL, NAMAKKAL-637018

5. Adaptability, accepting diversity and working in a team



6. Professional development and adapting to technological change



7. Ability to select and apply modern engineering and software tools

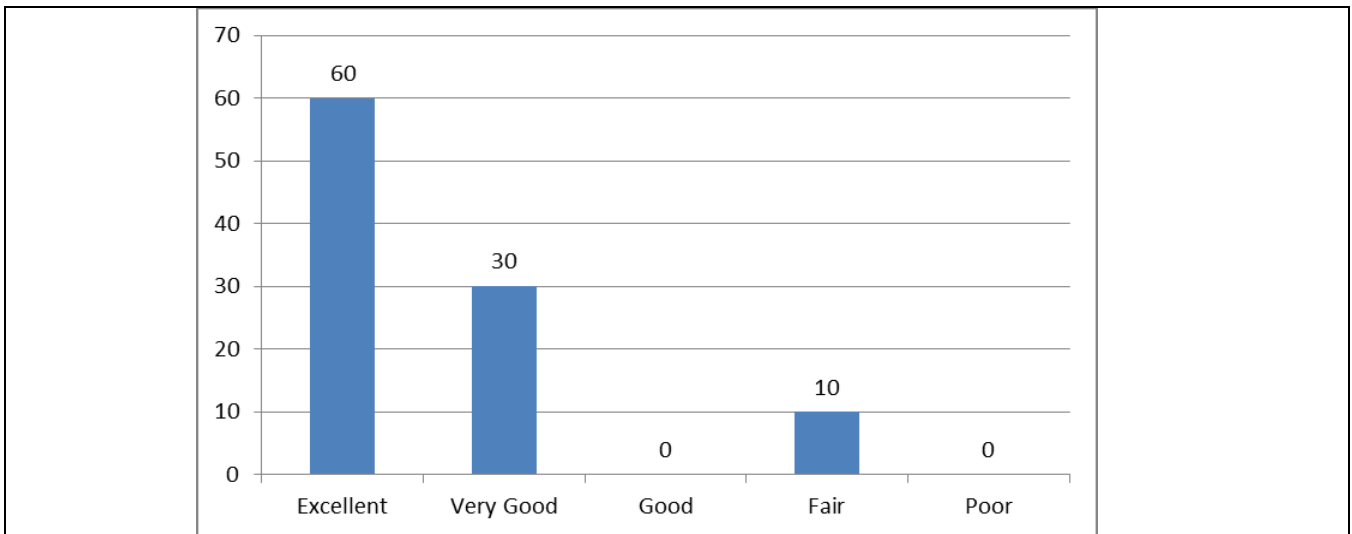
Excellent	Very Good	Good	Fair	Poor
60%	30%	10%	0%	0%



PAAVAI ENGINEERING COLLEGE

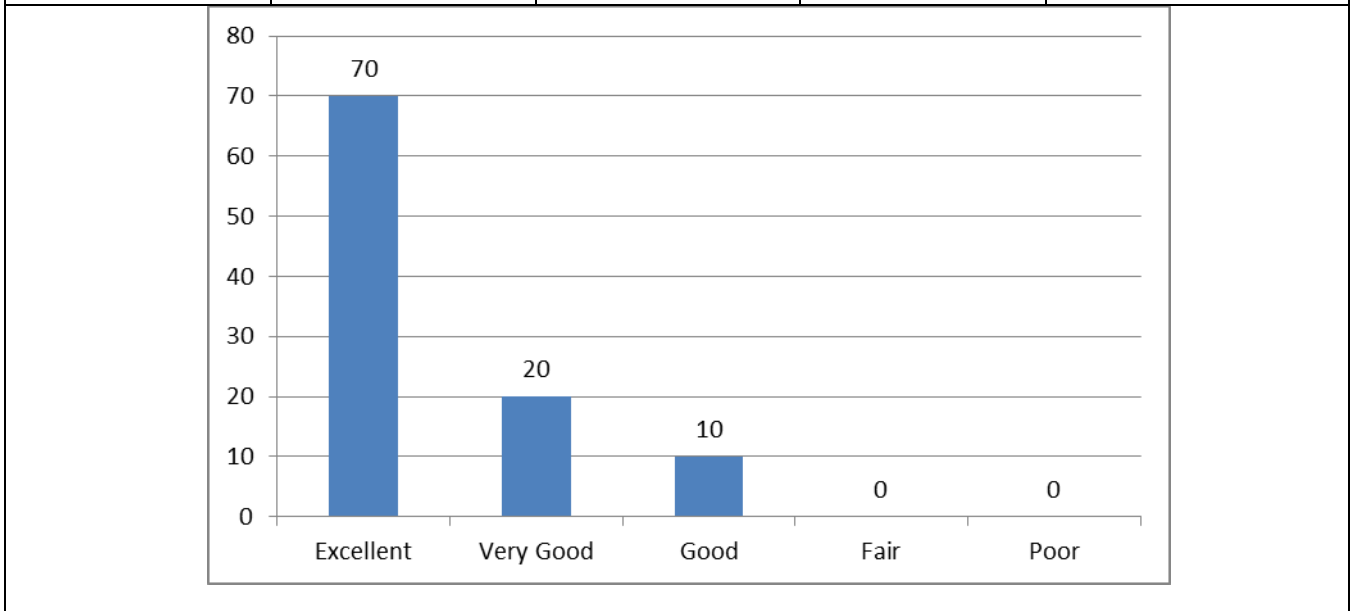
(Autonomous)

NH 44, PACHAL, NAMAKKAL-637018



8. Ability to manage projects in multidisciplinary environments.

Excellent	Very Good	Good	Fair	Poor
70%	20%	10%	0%	0%



9. Overall performance of our graduate, towards organizational growth.

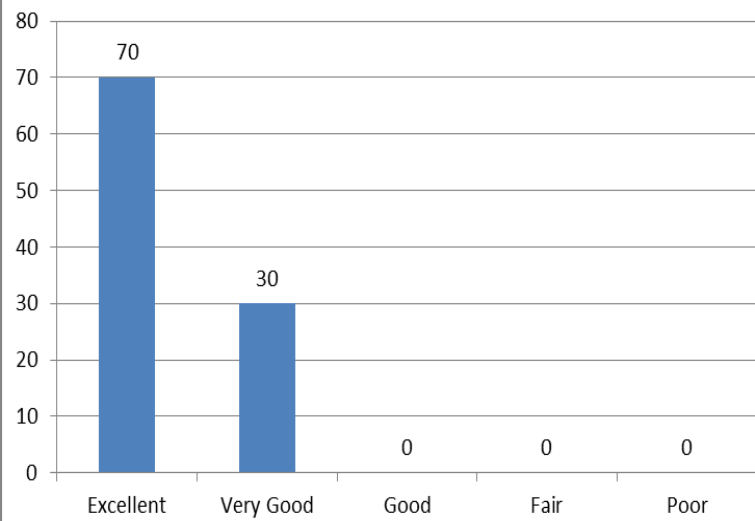
Excellent	Very Good	Good	Fair	Poor
70%	30%	0%	0%	0%



PAAVAI ENGINEERING COLLEGE

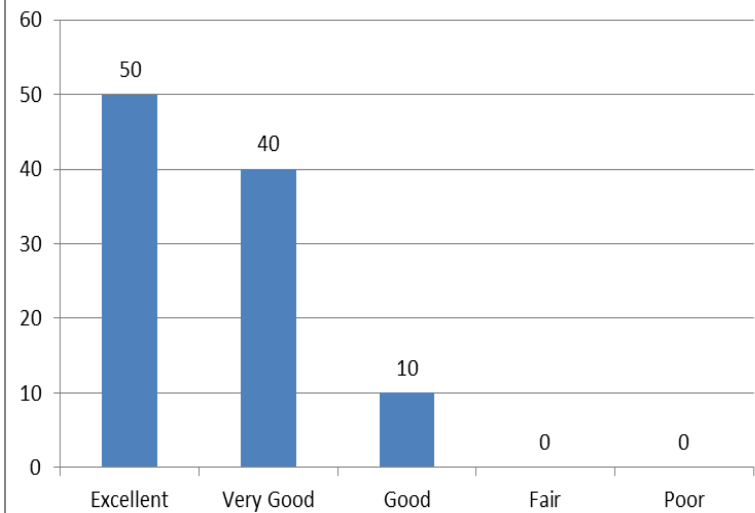
(Autonomous)

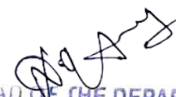
NH 44, PACHAL, NAMAKKAL-637018



10. Curriculum has relevance to real life situations, reflects current trends and practices in the respective disciplines.

Excellent	Very Good	Good	Fair	Poor
50%	40%	10%	0%	0%




HEAD OF THE DEPARTMENT
COMPUTER SCIENCE & ENGINEERING
PAAVAI ENGINEERING COLLEGE
(AUTONOMOUS)
NH 44, PACHAL (P.O) NAMAKKAL - 637018


PRINCIPAL
PAAVAI ENGINEERING COLLEGE
NH-7 PACHAL Post, NAMAKKAL Dist